



Philadelphia Regional Center for Children's Environmental Health



Working to Achieve Children's Environmental Health Equity in a Changing Climate

February 21, 2024
PEPH

A program of:



Penn
UNIVERSITY of PENNSYLVANIA

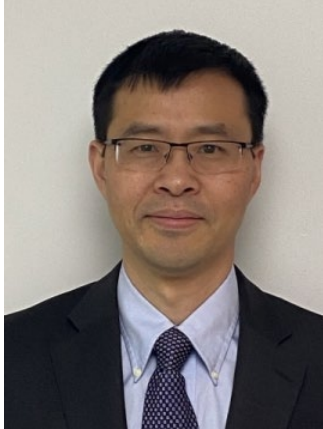


**Children's Hospital
of Philadelphia®**

Center Leadership and Staff



Rebecca Simmons,
MD, Co-Director



Aimin Chen,
MD, PhD
Co-Director



Marilyn Howarth, MD
Deputy Director



Tyra Bryant-
Stephens, MD
Translation Core
Co-Director

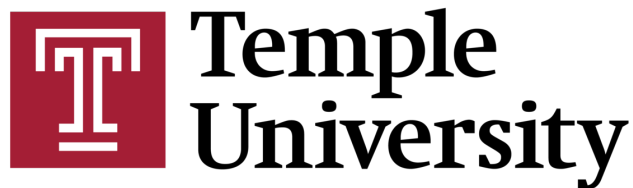


Jessica Jones
Gupta
Administrative
Director

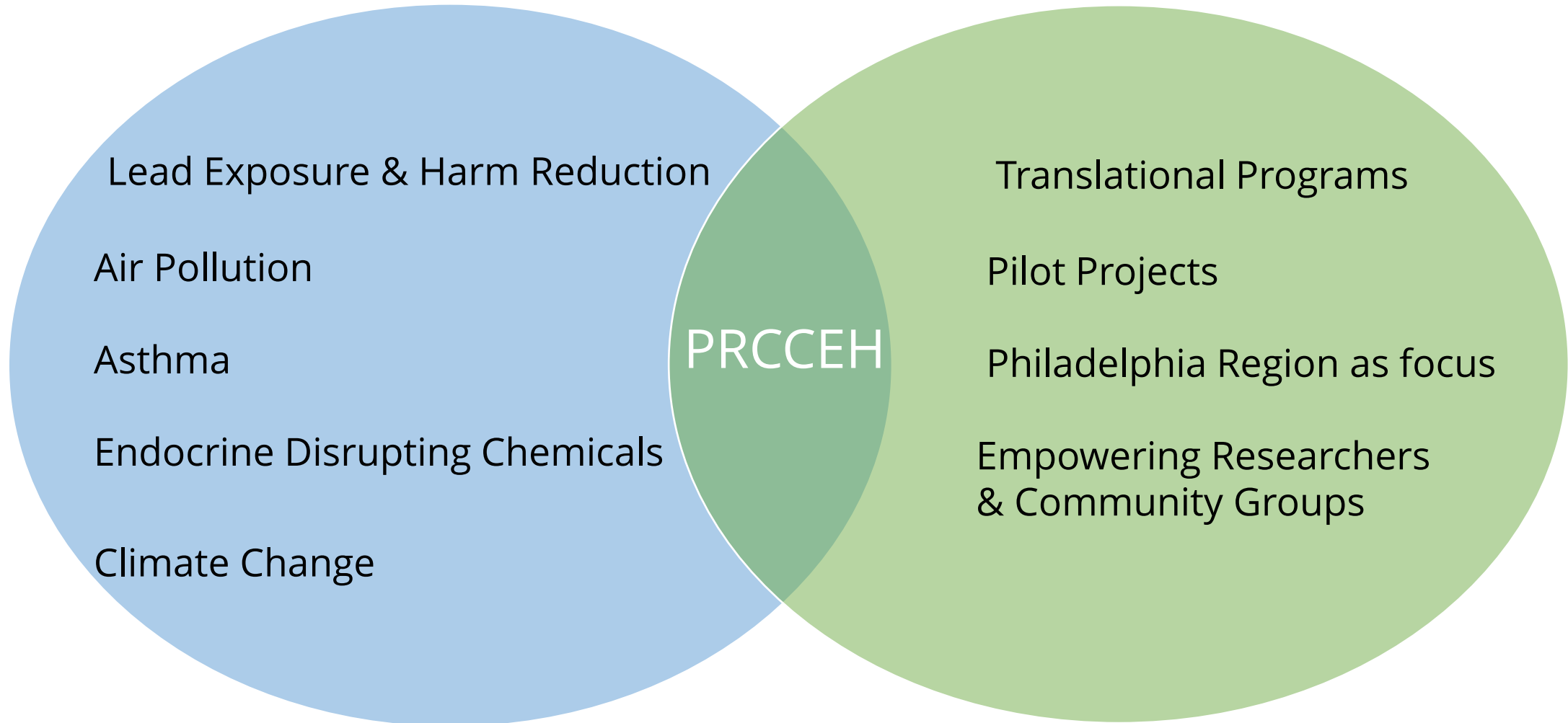


Isabella
Andreozzi,
Program
Coordinator,
Translation Core

40 Research Members



Our Focus Areas and Mission



Translation Core

The Mission of the Translation Core is to identify and apply existing environmental health science and proven translational products and programs to improve children's environmental health while identifying and testing new methods of translation through pilot projects.



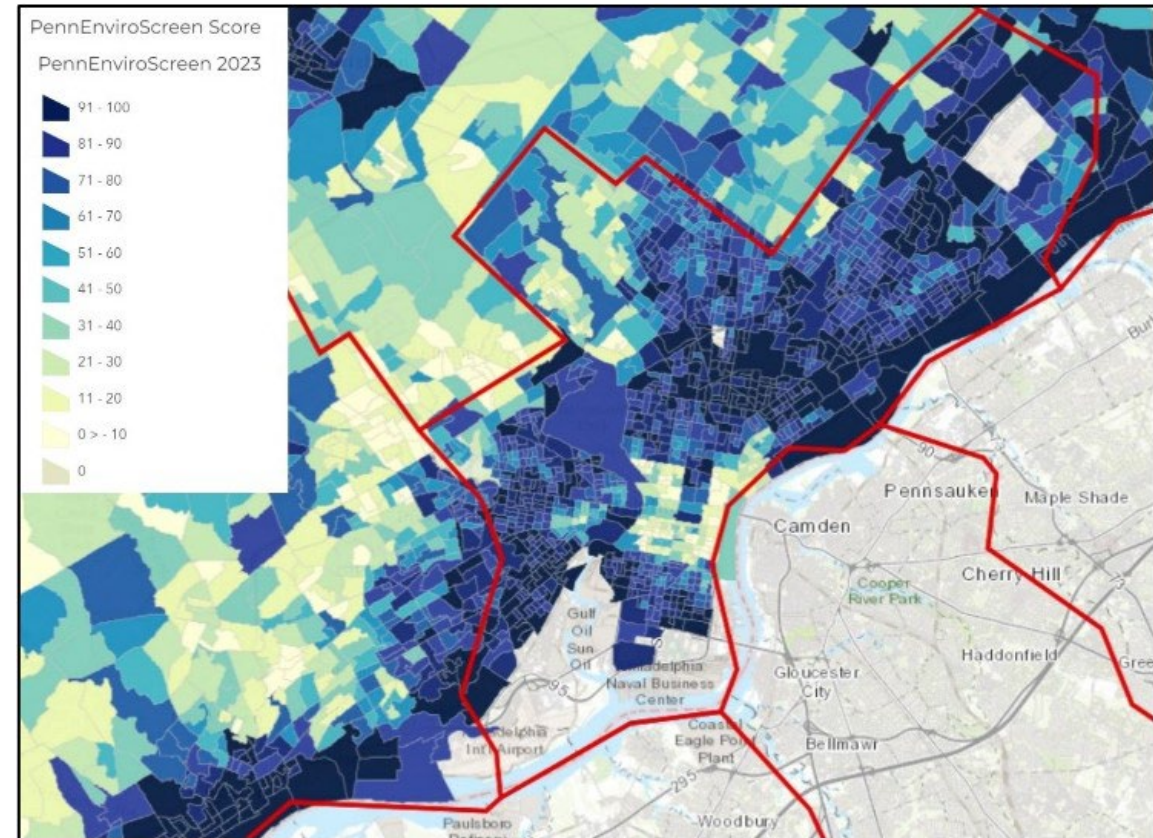


Chester Environmental Partnership

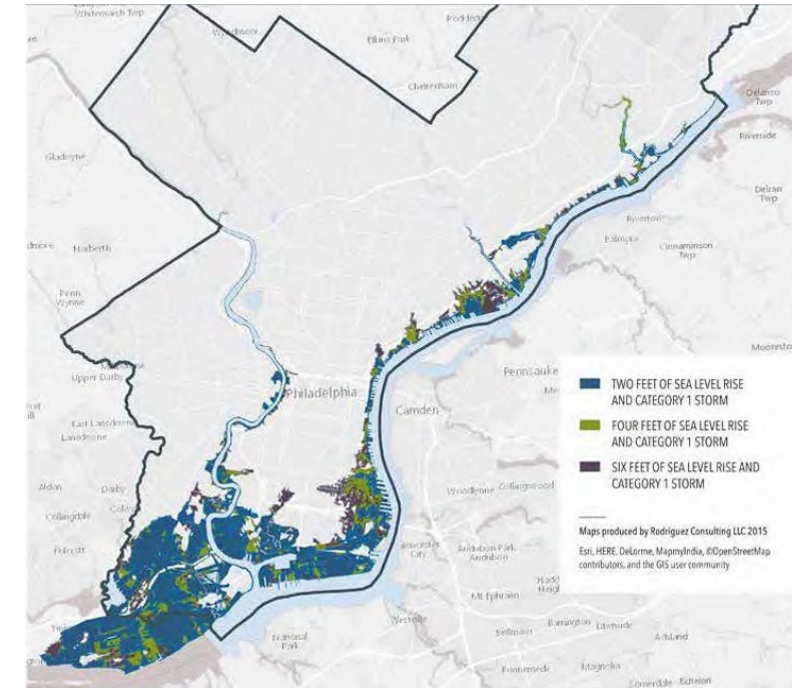


Philadelphia Scores High in Environmental Inequity

- PennEnviroScreen Score Considers:
 - Pollution Burden
 - Environmental Exposures
 - Environmental Effects
 - Population Characteristics
 - Sensitive Populations
 - Socioeconomic Factors



Climate Change in Philadelphia Region



More frequent and intense rain events

Flooding

- Mental health impacts of cumulative trauma
- Mold exacerbating allergies and asthma
- Disparate impact: low income community of color

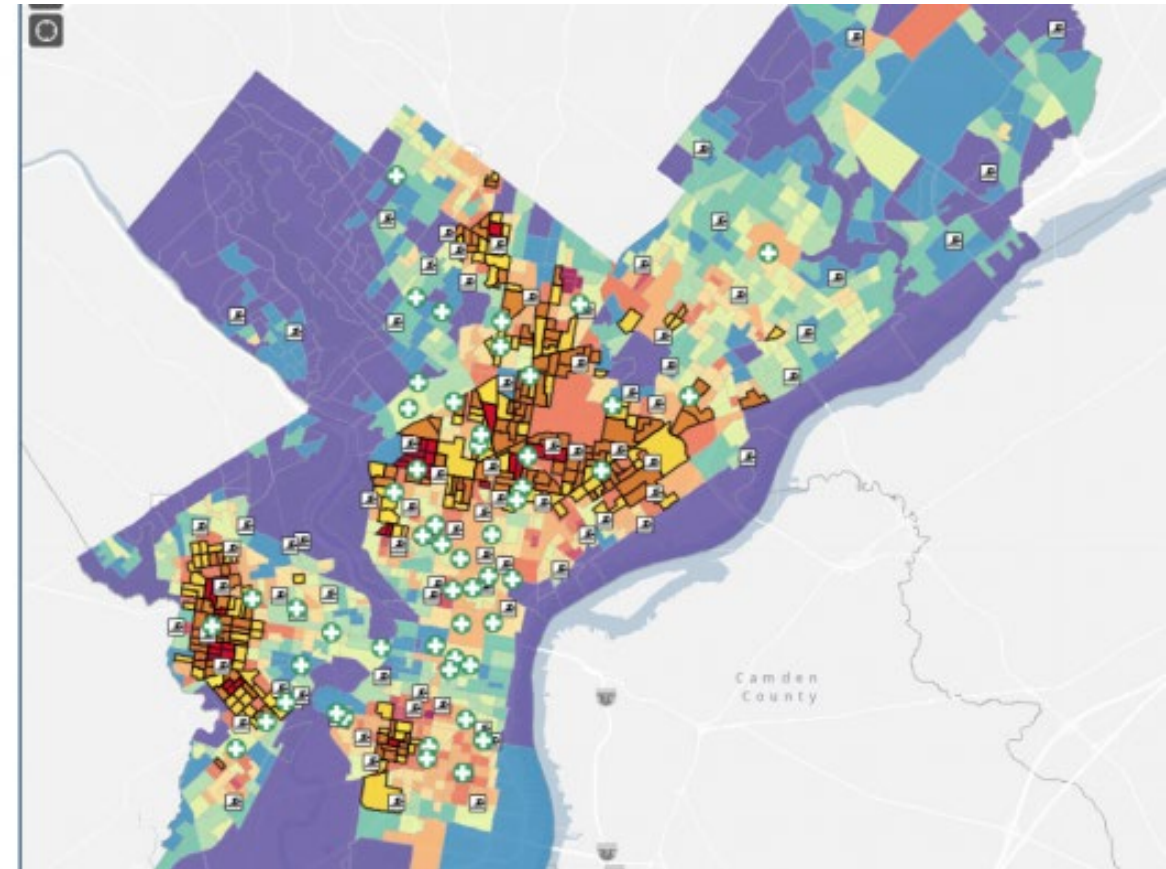
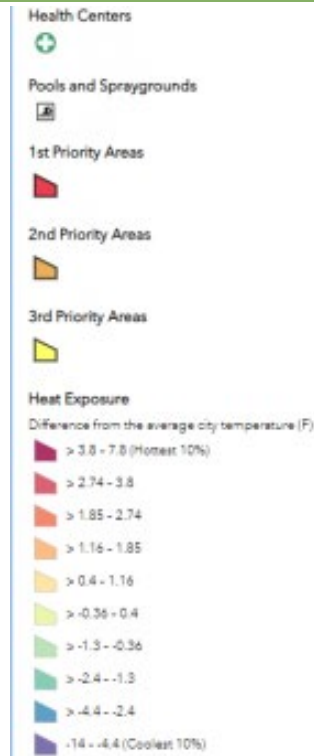
Climate Change in Philadelphia Region



More consecutive days >90 degrees

Heat Islands

- Neighborhoods lacking green space
- Can be 8 degrees hotter than other neighborhoods
- Disparate impact: low income communities of color



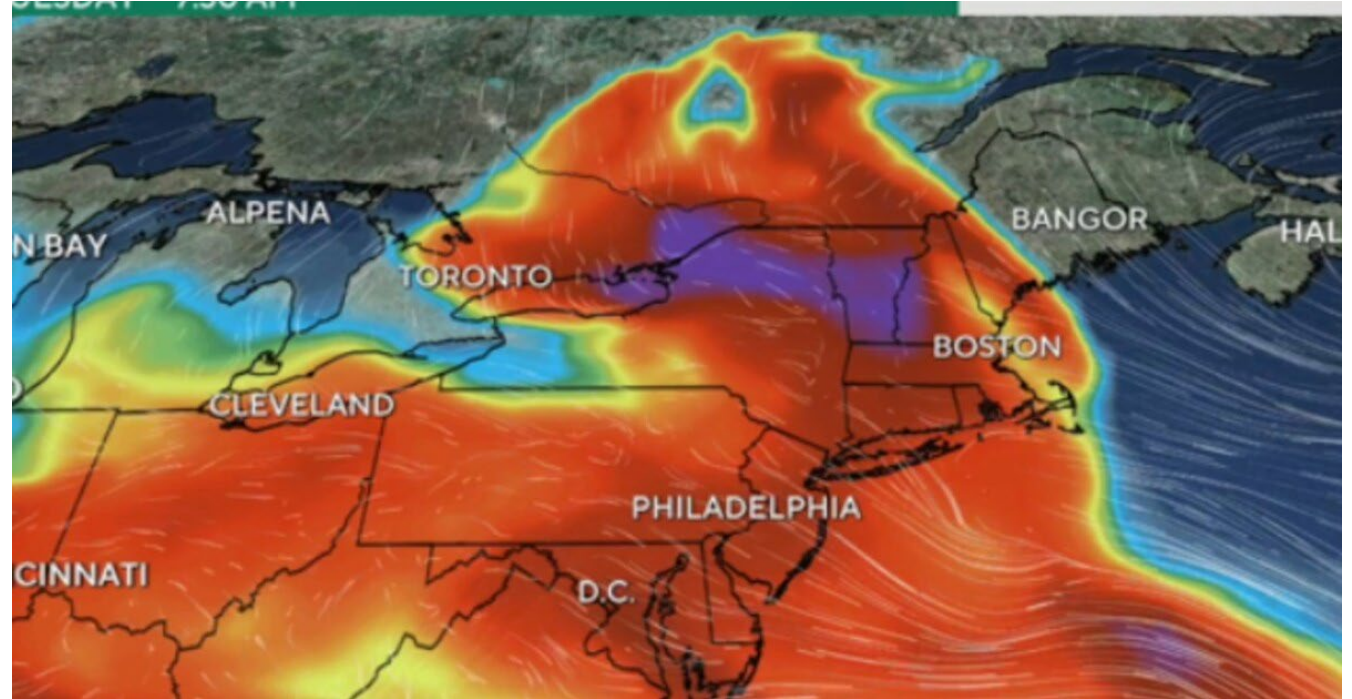
Climate Change in Philadelphia Region



Air pollution is expected to worsen

Air Pollution

- Philadelphia has never been in compliance with NAAQS for ozone
- Asthma rates in Philadelphia are 3x state rates in some neighborhoods
- Disparate impact: low income communities of color



Wildfire smoke summer 2023

Chester Community Asthma Prevention Program

Prevalence Childhood Asthma in Chester >20%

Goals Community Asthma Prevention Program:

- Increase asthma knowledge and improve self management
- Equip participants to be neighborhood asthma experts
- Promote asthma-safe home and school/child care environments
- Reduce disparate burden of asthma in EJ community



Reduce Triggers of Asthma in Your Home

Has your child been diagnosed with asthma?

The Community Asthma Prevention Program helps parents create a home environment that can help children...

- Reduce emergency room visits, hospital stays and days missed from school
- Have a better quality of life, so they can do the things they enjoy
- Understand how to use and manage their medications

Scan Here to Sign Up!

Take control. Get started today!

CH Children's Hospital of Philadelphia[®] Philadelphia Regional Center for Children's Environmental Health Perelman SCHOOL OF MEDICINE UNIVERSITY OF PENNSYLVANIA

Community Asthma Prevention Program

Partners:

- Horace Strand
- Katie Kenyon
- Rosetta Carter



Chester Environmental Partnership



BOYS & GIRLS CLUB
OF CHESTER



Community Asthma Prevention Program

Community Health Worker Delivered:

- Education
- Environmental Intervention
- Community Resource Connections

Home Visit	Education	Environmental Mitigation
First Visit	Enrollment/Pretest Social needs assessment	Consent form signed Environmental scan of child's bedroom and living area
Second Visit	Asthma as a chronic disease Signs and Symptoms Asthma indoor triggers/Avoidance techniques	Pest bait given Pillow and mattress covers Carpet removal instructions w/ tiles Electrostatic duster
Third visit	In-depth review of asthma medications and devices Review of asthma action plan	Observe placement of asthma trigger reduction supplies
Fourth Visit	Coaching for school/daycare/care coordination issues	Environmental scan photo of child's bedroom
3mo, 6mo, 9mo	Review meds, review caregiver concerns, care coordination	NA
12 months	Final home visit	Environmental scan

Chester Community Asthma Prevention Program

- Keystone First funded a second CHW
- We have enrolled 58 Chester families so far
- 26 Presentations have been completed to community stakeholders
- Funded one pilot program to reduce clutter to support the success of CAPP



Philadelphia's Built to Last Program

- Created by Philadelphia Energy Authority
- Whole home repair + Energy efficiency + Healthy homes
- Available for low income home owners
- 100 homes completed since 2022
- Goal is 10,000 homes by 2033
- Many health hazards are present



Adding Environmental Health Consultation to the Built to Last Program



2021-2022 Homes Completed:
50



2023 Homes Projected:
50



2024 Homes Projected:
150



2025 Homes Projected:
250

50
Consultations
completed

About Us

The **Philadelphia Regional Center for Children's Environmental Health** is dedicated to communicating the latest children's environmental health research to health care providers, policy makers and community members.

Our primary focus areas are asthma, lead, toxic chemicals and air pollution.

The Center and its members create, test and implement programs and processes to reduce environmental exposures early in life.



Free Environmental Health Consultations



For Built to Last Participants

Contact Us

215-573-9076
isabella.andreozzi@penntest.upenn.edu

prceh.upenn.edu



A service of the
Philadelphia Regional Center for Children's Environmental Health

A program of the
University of Pennsylvania and the
Children's Hospital of Philadelphia

A Nationwide Effort

We're one of six centers across the country funded by the National Institute of Environmental Health Sciences (NIEHS) with the goal of improving children's environmental health and developing new research and programs.

Grant P2CES033428

What is an Environmental Health Consultation?

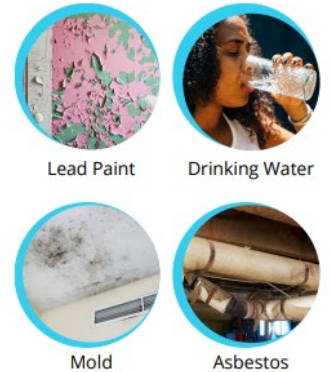
Built to Last has partnered with a team of medical and public health professionals from the Philadelphia Regional Center for Children's Environmental Health, a program of Penn and CHOP. We will deliver free telephone consultations to anyone living in this household. Our staff are trained to answer health related questions about the effects of home conditions.



Steps of a Consultation

- 1 Our coordinator will call you for your free health consultation and offer you free water and soil testing for lead.
- 2 During the consultation, you'll speak with our staff who will answer health questions and connect you with health resources.
- 3 Our staff will focus on health concerns identified during the home assessment and provide resources to address them.

Potential Sources of Environmental Hazards



Free Services We Offer

- Lead water testing
- Lead soil testing
- Guidance on understanding your lead water and soil test results
- Connection to medical and public health professionals
- Connections to community resources and health information to address concerns outside of the Built to Last Program

Built to Last Program Health Script and Process

Hi, am I speaking with Mr. (Ms.) ___? My name is ___ and I am from the Philadelphia Regional Center for Children's Environmental Health, a program of the University of Pennsylvania and Children's Hospital. We have partnered with the Built to Last Program that is currently (or recently worked) working on your home to talk with you about health implications of the problems they have found in your home that they have been addressing. We can provide health information and other resources that might be helpful to you. I'd like to ask you a few questions so that we can better help you. Is now a good time to talk for a few minutes?

Great! We noticed from the Built to Last Assessment.....

If now is not a good time, when are you available to talk in the next couple of days?

Conditions found during the home assessment

- Leaking pipes
- Leaking roof
- Ceiling damage
- Asbestos on pipes
- Lead water service line
- Chipping lead paint
- Holes in walls
- Mold
- Other

Environmental health hazards identified by Built to Last:

- Asthma
- Intact Asbestos
- Damaged Asbestos
- Lead in water
- Lead in paint
- Mold
- Pests

Built to last has identified a leak in the ___ of the home. Have you identified any other leaks in your home?

Yes
 No

Have you noticed any mold growth around these leaks or other areas of your home?

Yes
 No

Built to Last has identified someone living in the home that has asthma.

Yes
 No

Is this person younger than 16 years old?

Yes
 No

Is this person seeing a specialist for their asthma (pulmonologist)?

Yes
 No

Do you need to use your quick relief medicine (albuterol) more than 2 times a week?

Do you wake up in the middle of the night due to asthma more than 2 times a month?

Yes
 No

Do you refill your quick relief medicine (albuterol) more than 2

Built to Last Program sends us a referral

Program coordinator extracts information from the database:

Age of house

Number and age of children

Environmental hazards

Program coordinator prepares the Redcap survey to call the resident

During the call, issues identified are addressed and open-ended questions identify others

Appropriate materials, referrals and resources sent in mail/email

Common issues we address:

Asbestos

Lead in paint/water/soil

Mold

Safer Pest control

Safer cleaning techniques

Medical referrals

Climate change guidance

Translational Pilot Project

INVESTIGATION OF SHADE STRUCTURES IN ENCOURAGING MORE OUTDOOR PLAY IN THE SUMMER IN URBAN CHILDCARE



Lorna Rosenberg, MS
Randy Persaud, MPHc
Chanel Palmer, BSNc



Context and Aims

Childcare facilities in heat island neighborhoods lacked shade for children to play

Aims:

Provide outdoor shade structures to enhance comfort and increase outdoor play

Provide training for staff on how to use the Air Quality Index to make decisions about when to play outdoors

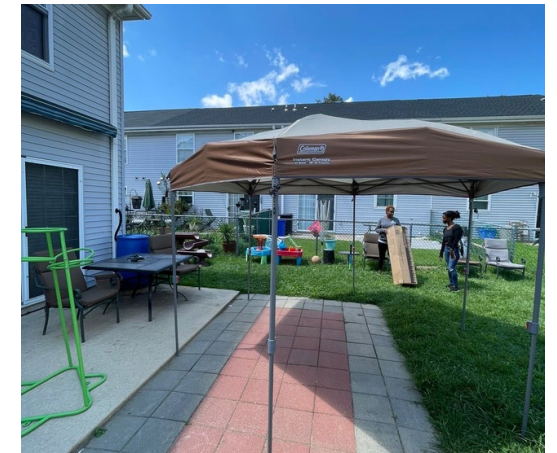


Child Care Community Impact

8 Centers received shade structures

Outdoor play increased by 14 minutes/day

6 degree reduction in temperature under shade structure was measured



Qualitative Data Collection: Follow-up phone calls to all participants with a survey

"The shade structure was easy to set up and place."

"The children and staff stayed outside for a longer duration. The heat didn't bother them as much as before, allowing them to engage in outdoor activities on the patio instead of just the porch."

"The structure made a difference for the kids. There were fewer complaints, and the children loved the canopy."

"Outdoor playtime increased; before, it was in full sun, but now there is a way to cool off."

Translation Core Pilot Project



Heather Gardiner, PhD
Inkyu Han, PhD

Lizette Lewis
Gloria Caragena Hart
Anthony Miller
Lee Nentwig



Cool Wave: Strengthening Community Capacity to Mitigate Urban Heat Exposure and Protect Children's Health in Philadelphia

Hypothesis: Frequent and extended use of fans during summer significantly reduces indoor heat exposure among low-income households with children

2021- more than 20 days of nighttime temperature >80 degrees

Baseline survey

240 fans distributed for use in child's bedroom at night

Temperature/humidity sensor child's room and living room for 4 weeks

Periodic zoom or text assessment of comfort

\$150 incentive at completion

Community engaged report back of data (individual and community)





Philadelphia Regional Center for Children's Environmental Health

Thank You!



@prcceh



/CEHPhilly



/company/prcceh



@prcceh

<https://prcceh.upenn.edu/>

A program of:



Penn
UNIVERSITY of PENNSYLVANIA



**Children's Hospital
of Philadelphia®**